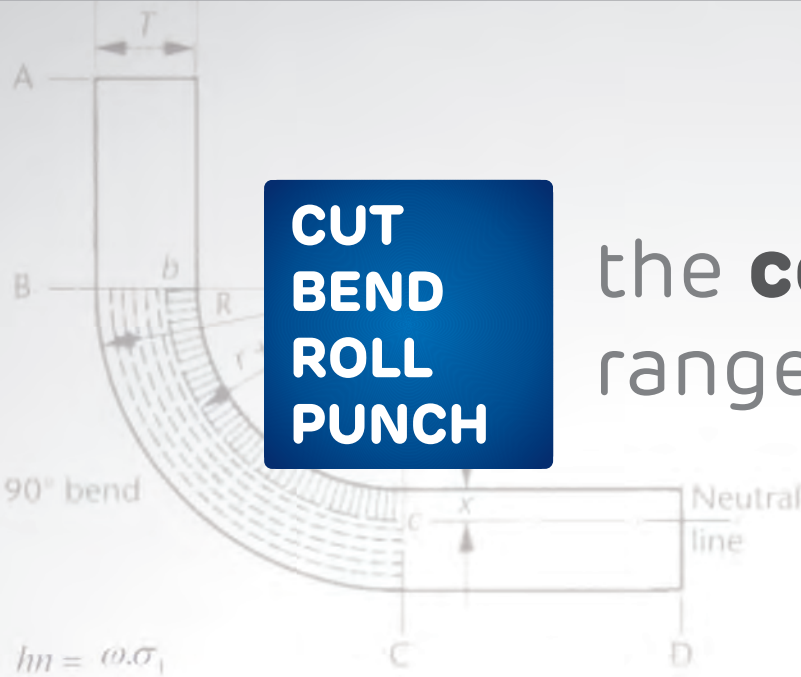
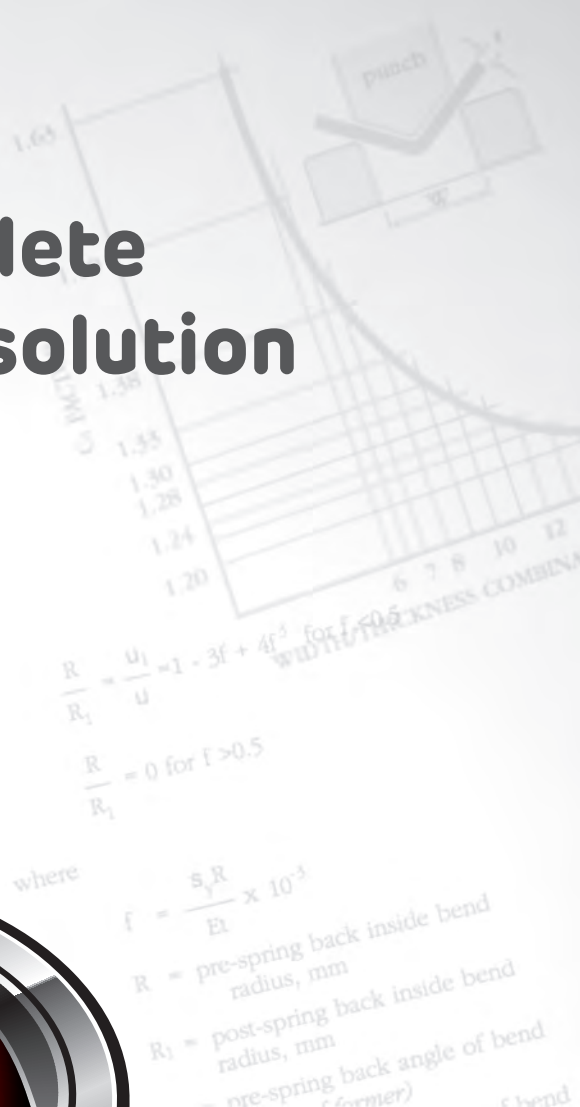


CUT BEND ROLL PUNCH

the **complete**
range of **solution**



$$\begin{aligned}
 hn &= \omega \cdot \sigma_1 \\
 k'n &= \omega \cdot KN \\
 k'l' &= \rho \cdot c \\
 hn &= \sigma_\eta \cdot mn \\
 mn &= P_{\eta\omega} \cdot k'l' - Q_{\theta,\eta} \cdot k'n \\
 mn &= P_{\eta\omega} \cdot \rho \cdot c - Q_{\theta,\eta} \cdot \omega \cdot KN \\
 \omega &= \frac{P_{\eta\omega} \cdot \rho \cdot c}{\sigma_1 + Q_{\theta,\eta} \cdot KN}
 \end{aligned}$$



www.energymission.com

HYDRAULIC PLATE ROLLING



SCAN FOR LIVE CHAT



ENERGYMISSION
MACHINERIES (INDIA) PVT. LTD.



Energy Mission Machineries (India) Pvt. Ltd. was established in 1999 with strong vision to deliver most reliable & economical solutions in sheet metal industry. Today Energy Mission is one of the fastest growing company with maximum satisfied customer base in India and Abroad.

WE ARE LEADING MANUFACTURER OF

- ◆ CNC Servo Hybrid & Synchro Press Brakes
- ◆ NC / Conventional Hydraulic Press Brakes
- ◆ CNC / NC / Conventional Hydraulic Shearing Machines
- ◆ Four / Three Roll Plate Rolling Machines
- ◆ Hydraulic Iron Workers
- ◆ Hydraulic / NC Busbar Cutting, Bending & Punching Machines
- ◆ Single / Double / Triple Action Deep Drawing Presses
- ◆ CNC Servo H & C Type Presses
- ◆ Punching & Blanking Hydraulic Presses
- ◆ CNC V Grooving Machines

OUR STRENGTH

- ◆ 22 years of Experience in Manufacturing
- ◆ World Class manufacturing facility spread in 2,50,000 sq.ft
- ◆ Production capacity of 1200 machines per annum
- ◆ More than 5000+ installation across India & Abroad
- ◆ Trained & qualified team of 350 employees
- ◆ Dedicated team for design & development
- ◆ Sales & service network all over India
- ◆ Keen quality control on each component & process
- ◆ Awarded as "Outstanding Entrepreneur of Year" in Year 2008-09 & Year 2014-15

OUR VISION

We at "Energy Mission" believe to deliver high quality products at competitive price supported by best service support. To achieve this mission, we have developed in-house manufacturing facilities, focused manufacturing processes with in-depth technology know-how, sales network associates across India & abroad. Enthusiastic team of customer care is always ready to rush within shortest time at the doorstep of customer or any requirements. Our skilled workforce has a proven performance record in satisfying diverse needs of customers around the globe.

MANUFACTURING FACILITY



FLOOR BORING MACHINE

- ♦ In house single reference machining Facility ensures required quality parameters.
- ♦ CNC Floor Boring machines with Traverse Travel of 9 mtr & 8 mtr.
- ♦ Heavy duty 360° Machining position Rotary table

CNC TURNING & VERTICAL MILLING CENTRE

- ♦ High-tech CNC lathe with 8 station turret for precise cylinder component machining
- ♦ CNC Vertical milling machine with 24 stations auto Turret
- ♦ CNC boring machine suitable for Concave & Convex shapes machining.



CNC PLANO MILLER

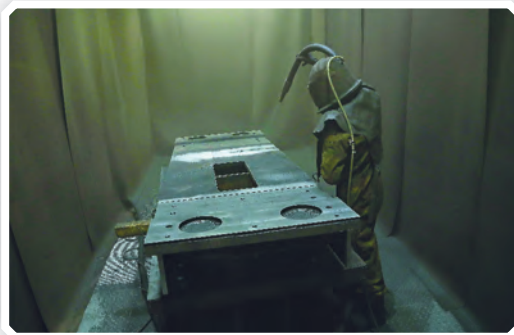
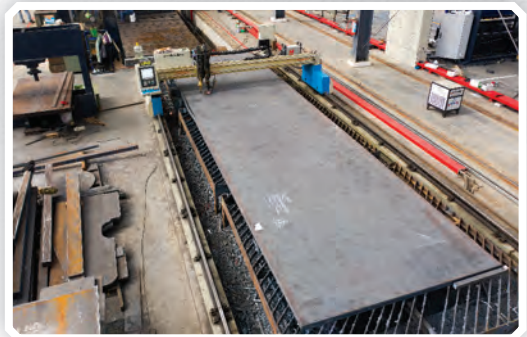
- ♦ CNC Plano Milling machines Up to 6 meter bed length
- ♦ Multiple head Single reference Machining
- ♦ Accurate, repetitive & fast operation reduces Production time & cost

INFRASTRUCTURE



CNC PLASMA CUTTING

- ◆ Precise & Fast CNC plasma cutting with X & Y controlled axis suitable for 4 mtr wide & 13 mtr long plates.
- ◆ Precise & accurate cutting accelerates manufacturing process.
- ◆ Inbuilt Nesting Facility to reduce wastage & production time



SHOT BLASTING UNIT

- ◆ Environment Friendly surface preparation Facility to remove rust and corrosive materials from the surface
- ◆ Capacity to handle up to 7 mtr. Long Plates & Assembly Structures

PAINT BOOTH UNIT

- ◆ Cross Draft type Paint booth facility to make painting & refinishing parts & Fabricated structures
- ◆ Suitable for 10 Mtr. Long Plates & Assembly Structures



4 ROLL PLATE BENDING

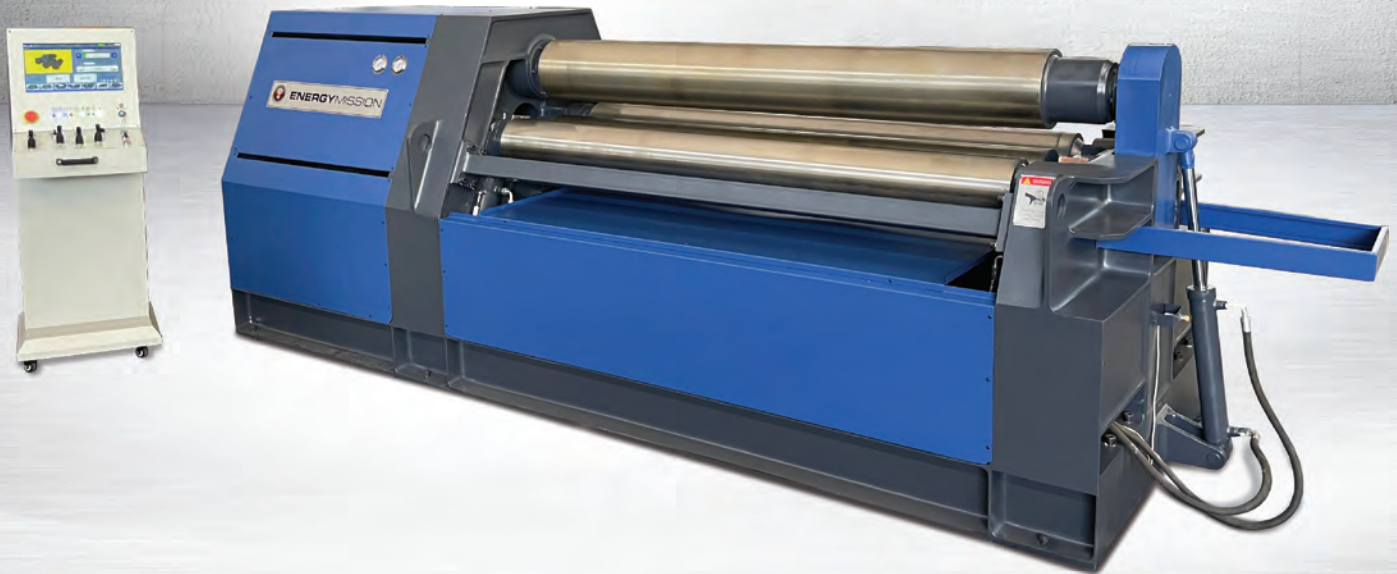
4 ROLL PYRAMID TYPE DOUBLE
PRE PINCH PLATE ROLLING



EM 4RL PBM SERIES

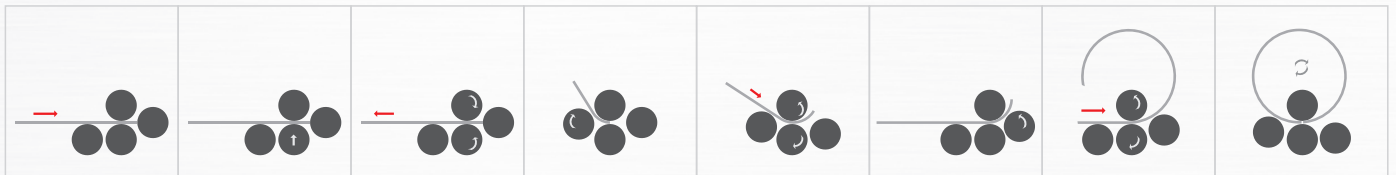
RANGE : 12 mm to 50 mm

LENGTH : 2000 mm to 3000 mm



The EM 4RL PBM Series 4 Roll Pyramid Type Double Pre-pinch Plate Rolling are designed with double side pre pinching arrangement. The unique design permits the pre-pinching of job by both Side rolls; hence the job is completed in Simple operation.

To roll a given diameter on a four-roll is extremely simple. You introduce plate into the roll touching it off to the opposing Side roll for quick and accurate squaring of plate. You then raise lower central pinch roll and the plate is locked into position with no possibility of slipping. After this you back plate up to near tangent point of central rolls, then raise the left or right-side roll to the correct position to achieve your diameter and begin rolling. When the back edge gets close, simply release the left Side roll and bring up the right-side roll until it touches the plate and finish the pipe in one pass.



SALIENT FEATURES

- ♦ 4 Roll PYRAMID type design with double pre -pinching arrangement
- ♦ High rolling Precision, no obvious residual straight seam, no need to rolling again
- ♦ High rolling roundness consistency
- ♦ It is high efficiency equipment for batch Rolling round multi section arc, Square, Conical and Special Shaped workpiece
- ♦ Top roll is fixed, bottom roll moves up & down and Side Rolls Move Inclined
- ♦ Side & Bottom rolls up-down through hydraulic cylinders
- ♦ Top Roll is power driven by planetary gear box
- ♦ Bending rolls are made of alloy steel
- ♦ Dropper end operation by hydraulic cylinders
- ♦ Overload protection
- ♦ Low role, smooth operation and less power consumption due to hydraulic system operates at lower pressure in smaller thickness
- ♦ Built - in - cone bending attachment
- ♦ International quality Hydraulic & Electrical Component

STANDARD ACCESSORIES

- ♦ Main drive motor
- ♦ Manual Centralized lubrication system
- ♦ Planetary gearbox attached with Hydraulic motor
- ♦ Digital read out for both Side Roll Position & Bottom Roll

OPTIONAL ACCESSORIES

- ♦ Hardened & Grounded Rolls
- ♦ Automatic lubrication system
- ♦ Material feed table
- ♦ NC / CNC Controls
- ♦ Side and top support for large diameter
- ♦ Top Roll Interchangeable

MODEL	ROLLING LENGTH	PRE ROLLING THICKNESS	ROLLING THICKNESS	MIN. BENDING DIAMETER	TOP ROLL DIAMETER	BOTTOM ROLL DIAMETER	SIDE ROLL DIAMETER	MAIN MOTOR POWER	OVERALL DIMENSION (LXWXH)
	mm	mm	mm	mm	mm	mm	mm	HP	mm
4RL PBM 1220	2000	8	12	480	240	240	220	10	4200 X 1500 X 1500
4RL PBM 1225	2500	8	12	520	260	260	240	15	5000 X 1600 X 1600
4RL PBM 1620	2000	10	16	520	260	260	240	15	5000 X 1600 X 1700
4RL PBM 1625	2500	10	16	600	300	300	260	15	5400 X 1700 X 1700
4RL PBM 1630	3000	10	16	660	330	330	290	20	6000 X 1700 X 1650
4RL PBM 2025	2500	14	20	660	330	330	290	20	5400 X 1900 X 1880
4RL PBM 2030	3000	14	20	760	380	360	310	25	5900 X 2200 X 2200
4RL PBM 2520	2000	16	25	660	330	330	290	20	4900 X 1900 X 1900
4RL PBM 2525	2500	16	25	760	380	360	310	25	5400 X 2100 X 2200
4RL PBM 2530	3000	16	25	820	410	390	330	30	6300 X 2100 X 2300
4RL PBM 3025	2500	20	30	820	410	390	330	30	5500 X 2100 X 2300
4RL PBM 3030	3000	20	30	880	440	420	360	30	6400 X 2200 X 2500
4RL PBM 4025	2500	28	40	1020	510	490	410	40	6000 X 2200 X 2800
4RL PBM 4030	3000	28	40	1080	540	520	440	50	7100 X 3000 X 3000
4RL PBM 5025	2500	35	50	1100	550	530	450	50	6500 X 3000 X 3000
4RL PBM 5030	3000	35	50	1200	600	580	500	60	7100 X 3000 X 3000

- The Capacities are based on normal steel with yield point 260 N/mm². (2600 Kg/Cm²)
- Remaining Straight end after pre-bending 1.5 - 2 x plate thickness, depending on plate thickness
- The minimum bending diameter is 2 x Top roll diameter, depending on plate thickness.
- Maximum cone bending thickness capacity is 70% of pre-bending thickness, width is 2/3 x bending length
- Machines not mentioned above are available on request & demand
- Overall Dimension for basic machine (with oil tank) without optional equipment
- All data subjected to change without prior notice

NOTE : NC / CNC can program each workpiece, and manually adjust the diameter deviation caused by the difference of material properties.





PLATE ROLLING | 3 ROLL PYRAMID TYPE DOUBLE PRE PINCH PLATE ROLLING

EM DP PBM SERIES

RANGE : 6 mm to 80 mm
LENGTH : 1500 mm to 4000 mm



The EM DP PBM SERIES 3 ROLL PYRAMID TYPE DOUBLE PRE PINCH PLATE ROLLING are designed with double side pre-pinching arrangement. The unique design permits the pre-pinching of job by both bottom rolls; hence the job is completed in multi operation. This feature makes the machine more productive and suitable for handling heavy jobs. The top roll is fixed and pre-pinching by both bottom rolls are thru hydraulic cylinders. The job is fed from one end to carry out pre-pinching & entire shell is rolled to desired bend radius. Other end pre-pinching is carried out by second bottom roll to complete the shell. The complete shell is prepared in multi operation.



Align the plate using the alignment grooves in the lower rolls or against the rear roll. The pre-bending is accomplished by clamping the plate between the top roll & one of the lower rolls.



The plate is bent towards the top roll by the other roll; and the plate edge is pre bent to minimum flat end possible. A length of plate is rolled & radius is checked.



Lower the clamping roll & raise the other roll until the plate is clamped again. Roll the plate into a closed cylinder & prebend the second plate edge.



Roll the plate through the machine and bend to desired diameter.



Finished cylinder is released from the machine by lowering the drop end.

SALIENT FEATURES

- ♦ 3 roll PYRAMID type design with double pre-pinching arrangement
- ♦ Top roll is fixed and bottom rolls moves up & down
- ♦ Bottom rolls up-down through hydraulic cylinders
- ♦ Two bottom rolls are power driven by planetary gearbox with electric or hydraulic motor
- ♦ Bending rolls are made of alloy steel.
- ♦ Dropper end operation by hydraulic cylinders
- ♦ Overload protection
- ♦ Low role, smooth operation and less power consumption due to hydraulic system operates at lower pressure in smaller thickness
- ♦ Built - in - cone bending attachment
- ♦ International quality Hydraulic & Electrical Component

STANDARD ACCESSORIES

- ♦ Main drive motor
- ♦ Remote electric panel console with push buttons
- ♦ Manual Centralized lubrication system
- ♦ Planetary gearbox attached with Hydraulic motor
- ♦ Digital read out for both bottom Roll position
- ♦ Extended shaft for profile bending

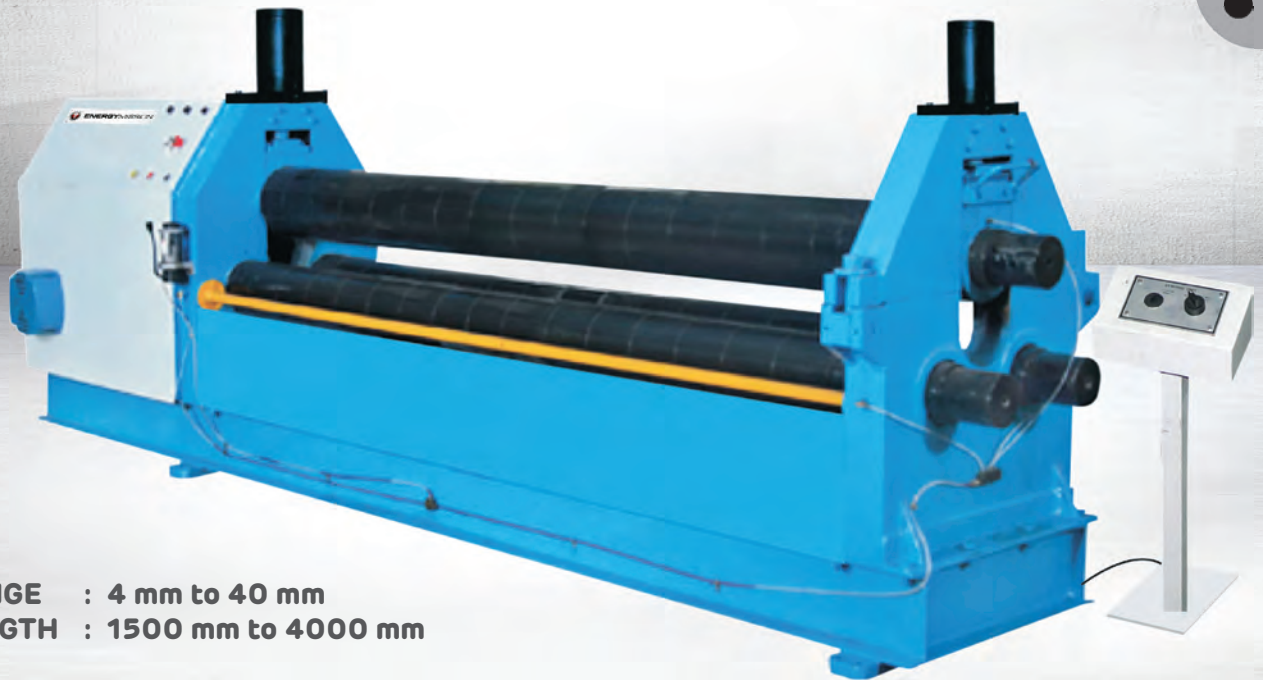
OPTIONAL ACCESSORIES

- ♦ Hardened & Grounded Rolls
- ♦ Automatic lubrication system
- ♦ Material feed table
- ♦ NC controls
- ♦ Side and top support for large dia meter
- ♦ Top Roll Drive
- ♦ Top Roll Interchangeable

MODEL	ROLLING LENGTH	PRE-ROLLING THICKNESS	ROLLING THICKNESS	TOP ROLL DIAMETER	BOTTOM ROLL DIAMETER	MIN. Ø IN PRE-ROLLING	MIN. Ø IN ROLLING	MOTOR POWER	PLATE ROLLING SPEED	OVERALL DIMENSION (LXWXH)
	mm	mm	mm	mm	mm	mm	mm	Hp.	Mtr/min	mm
EM DP PBM 0615	1500	4	6	200	180	400	600	5 + 1.5	3.0	4700 x 1700 x 1550
EM DP PBM 1215	1500	8	12	230	210	460	690	7.5 + 1.5	3.0	5000 x 1850 x 1700
EM DP PBM 1615	1500	11	16	250	230	500	750	10 + 2	3.0	5200 x 1950 x 1800
EM DP PBM 2015	1500	14	20	275	250	550	825	15 + 2	3.5	5600 x 2100 x 2000
EM DP PBM 2515	1500	16	25	325	290	650	975	20 + 3	3.0	5800 x 2250 x 2200
EM DP PBM 3015	1500	21	30	360	325	720	1080	30 + 5	3.0	5800 x 2400 x 2300
EM DP PBM 4015	1500	28	40	410	380	820	1230	40 + 7.5	2.5	6000 x 2650 x 2500
EM DP PBM 4515	1500	30	45	440	400	880	1320	50 + 7.5	2.0	6400 x 3000 x 2800
EM DP PBM 5015	1500	35	50	480	440	960	1440	60 + 10	2.0	6800 x 3300 x 3100
EM DP PBM 7015	1500	50	70	540	500	1080	1620	80 + 15	1.5	7000 x 3500 x 3250
EM DP PBM 8515	1500	60	85	580	530	1160	1740	100 + 20	1.5	7300 x 3850 x 3600
EM DP PBM 0620	2000	4	6	200	180	400	600	5 + 1.5	3.0	5300 x 1700 x 1500
EM DP PBM 1020	2000	7	10	230	210	460	690	7.5 + 1.5	3.0	5600 x 1850 x 1700
EM DP PBM 1220	2000	8	12	250	230	500	750	10 + 2	3.0	5800 x 1950 x 1800
EM DP PBM 1620	2000	11	16	275	250	550	825	15 + 2	3.5	6200 x 2000 x 2000
EM DP PBM 2020	2000	14	20	325	290	650	975	20 + 3	3.5	6300 x 2200 x 2100
EM DP PBM 2520	2000	16	25	360	325	720	1080	30 + 5	3.0	6300 x 2400 x 2200
EM DP PBM 3020	2000	21	30	410	380	820	1230	40 + 7.5	2.5	6300 x 2650 x 2500
EM DP PBM 4020	2000	28	40	440	400	880	1320	50 + 7.5	2.0	6600 x 3000 x 2800
EM DP PBM 5020	2000	35	50	500	440	1000	1500	60 + 15	2.0	7000 x 3300 x 3100
EM DP PBM 6020	2000	42	60	540	500	1080	1620	80 + 15	1.5	7200 x 3500 x 3250
EM DP PBM 7020	2000	50	70	580	530	1160	1740	100 + 20	1.5	7600 x 3850 x 3600
EM DP PBM 0625	2500	4	6	230	210	460	690	7.5 + 1.5	3.0	5500 x 1700 x 1500
EM DP PBM 0825	2500	5	8	230	210	460	690	7.5 + 1.5	3.0	5800 x 1700 x 1600
EM DP PBM 1025	2500	7	10	250	230	500	750	10 + 2	3.0	6000 x 1850 x 1800
EM DP PBM 1225	2500	8	12	275	250	550	825	15 + 2	3.5	6300 x 2000 x 2000
EM DP PBM 1625	2500	11	16	325	290	650	975	20 + 3	3.5	6600 x 2200 x 2200
EM DP PBM 2025	2500	14	20	360	325	720	1080	30 + 5	3.0	6700 x 2400 x 2300
EM DP PBM 3025	2500	21	30	410	380	820	1230	40 + 7.5	2.5	6800 x 2650 x 2500
EM DP PBM 3525	2500	24	35	440	400	880	1320	50 + 7.5	2.0	7200 x 3000 x 2800
EM DP PBM 4025	2500	28	40	480	440	960	1440	60 + 10	2.0	7500 x 3300 x 3100
EM DP PBM 5025	2500	35	50	540	500	1080	1620	80 + 15	1.5	7700 x 3500 x 3300
EM DP PBM 0630	3000	4	6	230	210	460	690	7.5 + 1.5	3.0	5700 x 1800 x 1700
EM DP PBM 0830	3000	5	8	250	230	500	750	10 + 2	3.0	6000 x 1950 x 1800
EM DP PBM 1230	3000	8	12	275	250	550	825	15 + 2	3.5	6400 x 2100 x 2000
EM DP PBM 1630	3000	10	16	325	290	650	975	20 + 3	3.5	6700 x 2200 x 2100
EM DP PBM 2030	3000	14	20	360	325	720	1080	30 + 5	3.0	7000 x 2400 x 2300
EM DP PBM 2530	3000	16	25	410	380	820	1230	40 + 7.5	2.5	7200 x 2650 x 2500
EM DP PBM 3030	3000	21	30	440	400	880	1320	50 + 7.5	2.0	7700 x 3000 x 2800
EM DP PBM 4030	3000	28	40	500	440	1000	1500	60 + 15	2.0	8000 x 3300 x 3100
EM DP PBM 5030	3000	35	50	540	500	1080	1620	80 + 15	1.5	8250 x 3500 x 3250
EM DP PBM 6030	3000	42	60	580	530	1160	1740	100 + 20	1.5	8500 x 3850 x 3600
EM DP PBM 0640	4000	4	6	250	230	500	750	10 + 2	3.0	6600 x 1950 x 1800
EM DP PBM 0840	4000	5	8	275	250	550	825	15 + 2	3.5	7000 x 2100 x 2000
EM DP PBM 1040	4000	7	10	325	290	650	975	20 + 3	3.5	7200 x 2250 x 2200
EM DP PBM 1640	4000	10	16	360	325	720	1080	30 + 5	3.0	7500 x 2400 x 2300
EM DP PBM 2040	4000	14	20	410	380	820	1230	40 + 7.5	2.5	7700 x 2650 x 2500
EM DP PBM 2540	4000	16	25	440	400	880	1320	50 + 7.5	2.0	8200 x 3000 x 2800
EM DP PBM 3040	4000	21	30	480	440	960	1440	60 + 10	2.0	8500 x 3300 x 3100
EM DP PBM 4040	4000	28	40	540	500	1080	1620	80 + 15	1.5	8700 x 3500 x 3250
EM DP PBM 5040	4000	35	50	580	530	1160	1740	100 + 20	1.5	9000 x 3850 x 3600

- The Capacities are based on normal steel with yield point 260 N/mm². (2600 Kg/Cm²)
- Remaining Straight end after pre-bending 2.5 - 3 x plate thickness, depending on plate thickness.
- The minimum Pre-bending diameter is 2 x Top roll diameter, depending on plate thickness.
- The minimum bending diameter is 3 x Top roll diameter, depending on plate thickness.
- Maximum cone bending thickness capacity is 70% of pre-bending thickness, width is 2/3 x bending length.
- Machines not mentioned above are available on request & demand.
- Overall Dimension for basic machine (with oil tank) without optional equipment.
- All data subjected to change without prior notice.





RANGE : 4 mm to 40 mm
LENGTH : 1500 mm to 4000 mm

The EM HM PBM Series 3 Roll Pyramid Type Hydro Mechanical Plate Rolling Machines are designed with top roll UP & DOWN movement by hydraulic cylinder. This saves time & labor to adjust top roll. This feature makes the machine more productive and suitable for handling heavy jobs. Dropper end movement is done by hydraulic cylinder.

EM HM PBM SERIES (HYDRO-MECHANICAL)
SALIENT FEATURES

- ✦ 3 roll PYRAMID type design machine
- ✦ The robust welded structure is made of UT tested IS:2062 M.S. plates

- ✦ The top roll adjustment is by Hydraulic Cylinder
- ✦ Bottom rolls are power driven
- ✦ Bending rolls are made of alloy steel

STANDARD ACCESSORIES

- ✦ Main drive motor
- ✦ Reverse / Forward roll drive with overload protection
- ✦ Manual Centralized lubrication system
- ✦ Warm Gearbox attached with Electric Motor
- ✦ Hydraulic end dropper arrangement
- ✦ Extended shaft for profile bending
- ✦ Conical bending arrangement

OPTIONAL ACCESSORIES

- ✦ Hardened & Grounded Rolls
- ✦ Automatic lubrication system
- ✦ Material feed table
- ✦ Side and top support for large dia meter

EM PBM SERIES (MECHANICAL)
SALIENT FEATURES

- ✦ 3 roll PYRAMID type design machine
- ✦ The robust welded structure is made of UT tested IS:2062 M.S. plates

- ✦ The top roll adjustment is by screw jack
- ✦ Bottom rolls are power driven
- ✦ Bending rolls are made of alloy steel

STANDARD ACCESSORIES

- ✦ Main drive motor
- ✦ Reverse / Forward roll drive with overload protection
- ✦ Manual Centralized lubrication system
- ✦ Warm Gearbox attached with Electric Motor
- ✦ Manual end dropper arrangement
- ✦ Conical bending arrangement
- ✦ Extended shaft for profile bending

OPTIONAL ACCESSORIES

- ✦ Hardened & Grounded Rolls
- ✦ Automatic lubrication system
- ✦ Material feed table



RANGE : 4 mm to 20 mm
LENGTH : 1500 mm to 4000 mm

The EM PBM Series 3 Roll Pyramid Type Mechanical Plate Rolling are designed to cater the basic requirements of rolling & forming of metal plates. In this machine, the bottom rolls are driven by electric motor & gear box. The upper roll is having manual up & down adjustment to achieve desired bending radius. This is a very simple & robust design machine suitable for light to medium jobs.

MODEL	ROLLING LENGTH	ROLLING THICKNESS	TOP ROLL DIAMETER	BOTTOM ROLL DIAMETER	MIN. ROLLING DIAMETER	PLATE ROLLING SPEED	MOTOR POWER (MECHANICAL)	MOTOR POWER (HYDRO MECH)	OVERALL DIMENSION (LXWXH)
	mm	mm	mm	mm	mm	Mtr/min	Hp.	Hp.	mm
EM PBM 312	1250	3	110	100	220	5.0	3	3 + 1.5	3000 x 1000 x 1200
EM PBM 315	1500	3	120	100	240	5.0	3	3 + 1.5	3300 x 1000 x 1250
EM PBM 320	2000	3	130	105	260	5.0	3	3 + 1.5	3800 x 1000 x 1300
EM PBM 325	2500	3	140	115	280	5.0	5	5 + 2	4300 x 1000 x 1350
EM PBM 330	3000	3	160	135	320	4.5	7.5	7.5 + 2	5000 x 1150 x 1600
EM PBM 412	1250	4	120	100	240	5.5	3	3 + 1.5	3000 x 1100 x 1250
EM PBM 415	1500	4	130	105	260	5.5	3	3 + 1.5	3300 x 1100 x 1300
EM PBM 420	2000	4	140	115	280	5.0	5	5 + 2	3800 x 1100 x 1350
EM PBM 425	2500	4	160	135	320	4.5	7.5	7.5 + 2	4300 x 1150 x 1550
EM PBM 430	3000	4	180	150	360	4.5	7.5	7.5 + 2	5000 x 1150 x 1650
EM PBM 612	1250	6	130	105	260	5.0	3	3 + 1.5	3000 x 1100 x 1300
EM PBM 615	1500	6	140	115	280	5.0	5	5 + 2	3300 x 1100 x 1350
EM PBM 620	2000	6	160	135	320	4.5	7.5	7.5 + 2	4000 x 1150 x 1600
EM PBM 625	2500	6	180	150	360	4.5	7.5	7.5 + 2	4500 x 1150 x 1600
EM PBM 630	3000	6	210	180	420	4.0	10	10 + 2	5100 x 1200 x 1700
EM PBM 812	1250	8	140	115	280	5.0	5	5 + 2	3100 x 1100 x 1350
EM PBM 815	1500	8	160	135	320	4.5	7.5	7.5 + 2	3500 x 1150 x 1500
EM PBM 820	2000	8	180	150	360	4.5	7.5	7.5 + 2	4100 x 1150 x 1700
EM PBM 825	2500	8	210	180	420	4.0	10	10 + 2	4600 x 1200 x 1750
EM PBM 830	3000	8	230	200	460	4.0	10	10 + 2	5200 x 1250 x 1750
EM PBM 1012	1250	10	160	135	320	4.5	7.5	7.5 + 2	3200 x 1150 x 1600
EM PBM 1015	1500	10	180	150	360	4.5	7.5	7.5 + 2	3500 x 1150 x 1600
EM PBM 1020	2000	10	200	180	400	4.5	7.5	7.5 + 2	4200 x 1200 x 1700
EM PBM 1025	2500	10	230	200	460	4.0	10	10 + 2	4700 x 1250 x 1750
EM PBM 1030	3000	10	250	225	500	3.5	15	15 + 3	5500 x 1400 x 1900
EM PBM 1212	1250	12	180	150	360	4.5	7.5	7.5 + 2	3500 x 1200 x 1700
EM PBM 1215	1500	12	200	180	400	4.5	7.5	7.5 + 2	3800 x 1200 x 1750
EM PBM 1220	2000	12	230	200	460	4.0	10	10 + 2	4400 x 1250 x 1800
EM PBM 1225	2500	12	250	225	500	3.5	15	15 + 3	5000 x 1400 x 1900
EM PBM 1230	3000	12	280	250	560	3.0	20	20 + 5	5700 x 1500 x 1900
EM PBM 1612	1250	16	210	180	420	4.5	10	10 + 2	3500 x 1200 x 1750
EM PBM 1615	1500	16	230	200	460	4.0	10	10 + 2	3800 x 1250 x 1800
EM PBM 1620	2000	16	250	225	500	3.5	15	15 + 3	4500 x 1400 x 1900
EM PBM 1625	2500	16	280	250	560	3.0	20	20 + 5	5300 x 1500 x 2000
EM PBM 1630	3000	16	300	280	600	3.0	20	20 + 5	5800 x 1550 x 2050
EM PBM 2012	1250	20	230	200	460	4.0	10	10 + 2	3500 x 1250 x 1750
EM PBM 2015	1500	20	250	225	500	3.5	15	15 + 3	3800 x 1400 x 1900
EM PBM 2020	2000	20	280	250	560	3.0	20	20 + 5	4700 x 1500 x 2000
EM PBM 2025	2500	20	300	280	600	3.0	20	20 + 5	5300 x 1550 x 2050
EM PBM 2030	3000	20	330	300	660	2.5	25	25 + 5	5800 x 1600 x 2100

- The capacities are based on Normal steel with yield point 260 N/mm². (2600 Kg/Cm²)
- Remaining Straight end after pre-bending 2.5 - 3 x plate thickness, depending on plate thickness.
- The minimum bending diameter is 2 x Top roll diameter, depending on plate thickness.
- Machines not mentioned above are available on request & demand.
- All data subjected to change without prior notice.



ACHIEVEMENT



**AWARDED AS
"OUTSTANDING
ENTREPRENEUR
OF YEAR" IN YEAR
2008-09 & YEAR 2014-15**

PRODUCTS



CNC Press Brake



NC / Hyd. Press Brake



Hyd. Press Brake



Double Pinch Plate Roller



CNC / NC Shearing Machine



Hyd. Shearing Machine



Busbar Machine



Iron Worker Machine



Hyd. Deep Drawing Press



Hyd. C & H - Frame Press



Hyd. Servo Press



CNC V Grooving

SOME OF OUR CLIENTS



ENERGYMISSION
MACHINERIES (INDIA) PVT. LTD.

SCAN FOR LIVE CHAT
+91 99790 66669



OFFICE : Plot No : 87/1, Phase-I, Opp. Pushpak Industrial Estate, GIDC, Vatva, Ahmedabad - 382445, Gujarat - India.
FACTORY : Plot No : E-9/3, Sanand - II Industrial Area, Bol GIDC, Sanand - 382170, Ahmedabad, Gujarat - India.

MARKETING : +91 98244 81470 | +91 98243 03302
SERVICE : +91 99099 58538
RECEPTION : +91 99244 59591

info@energymission.com | energymission@gmail.com
care@energymission.com
contact@energymission.com | www.energymission.com